

ROAD INDEX

A	J	S	STILLWELL RD. A3
B	K	T	TRAILWOOD RD. (PVT) F4
BROOKVIEW RD. (PVT) F3	KILE RD. A1-A4		
BUNDYSBURG RD. F4-F6			
BURTON WINDSOR RD. C6-F5			
C	L	U	
CHARDON WINDSOR RD. A2-F2			
CLAY STREET B1-B6			
D	M	V	
DURKEE RD. A6-B6	MADISON RD. D1-D6		
	MAYFIELD RD. A4-F4		
E	N	W	WINDMILL POINT ROAD B3
F	O	X	OLD STATE RD. A6
FLOWERSIDE RD. (PVT) F4			
G	P	Y	
HAYES RD. E5	PIONEER RD. B5-F5		
HUNTLEY RD. B3-F3	PLANK RD. E1-F2		
HUNT RD. E2-E4	PRINCETON RD. B2-B6		
I	Q	Z	

- ① HUNTSBURG ELEM. SCHOOL
- ② AMISH SCHOOL
- ③ AMISH SCHOOL
- ④ HUNTSBURG BAPTIST CH.
- ⑤ HUNTSBURG CONGREGATIONAL CH.
- ⑥ HUNTSBURG CEMETERY
- ⑦ HUNTSBURG CEMETERY
- ⑧ UNITED STATES POST OFFICE
- ⑨ TOWN HALL
- ⑩

HUNTSBURG TOWNSHIP

SCALE: 1" = 2000'
 ROBERT L. PHILLIPS,
 GEauga COUNTY ENGINEER

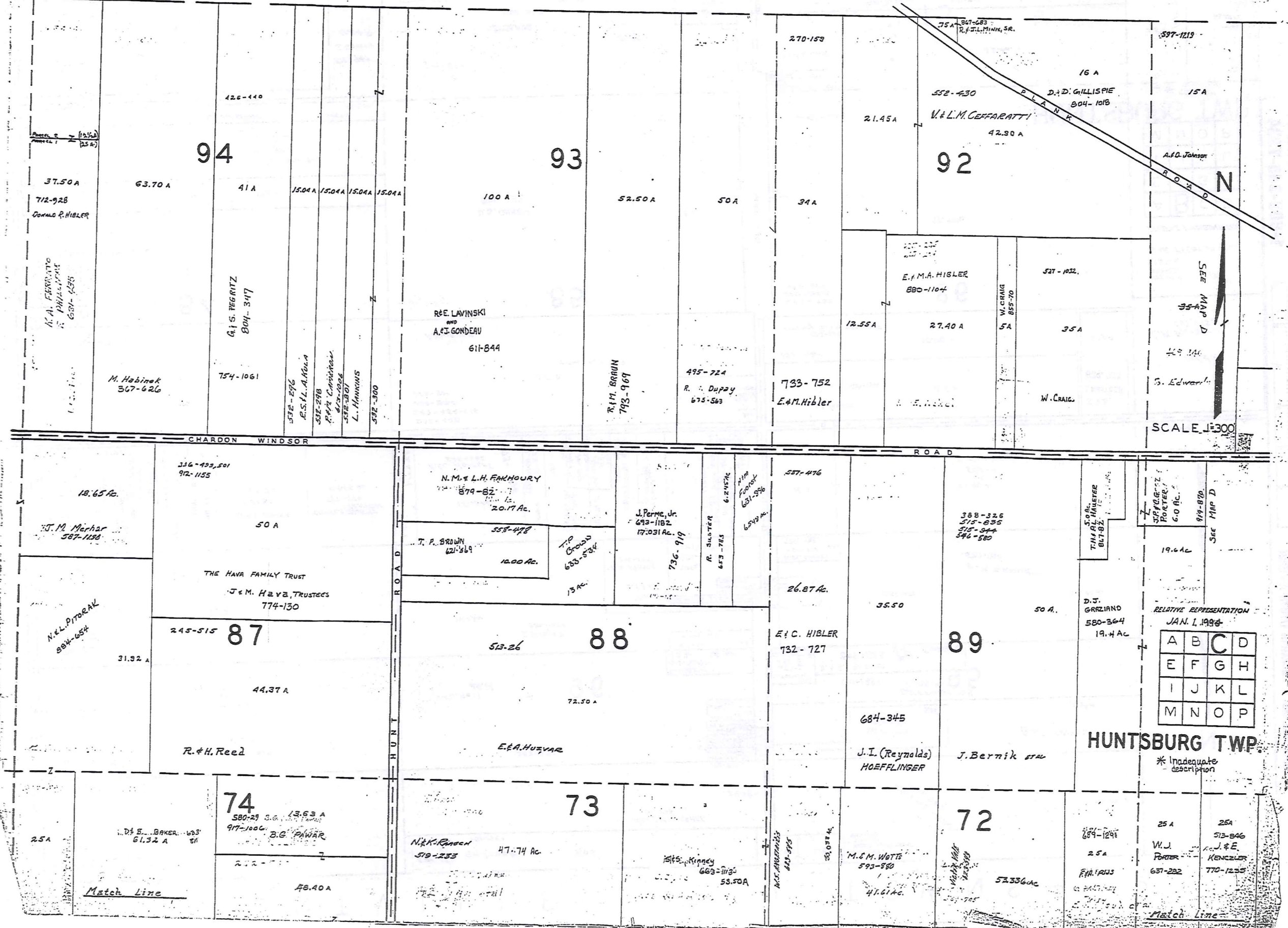
--- UNPAVED ROADS
 --- PAVED ROADS
 --- TOWNSHIP LINE
 --- COUNTY LINE

TRW-REDI
 SCALE IN 1/10 OF AN INCH
 1-800-345-7334

MONTVILLE TOWNSHIP

TRW-REDI
SCALE IN 1/10 OF AN INCH

1-800-345-7334



RELATIVE REPRESENTATION
JAN. 1, 1998

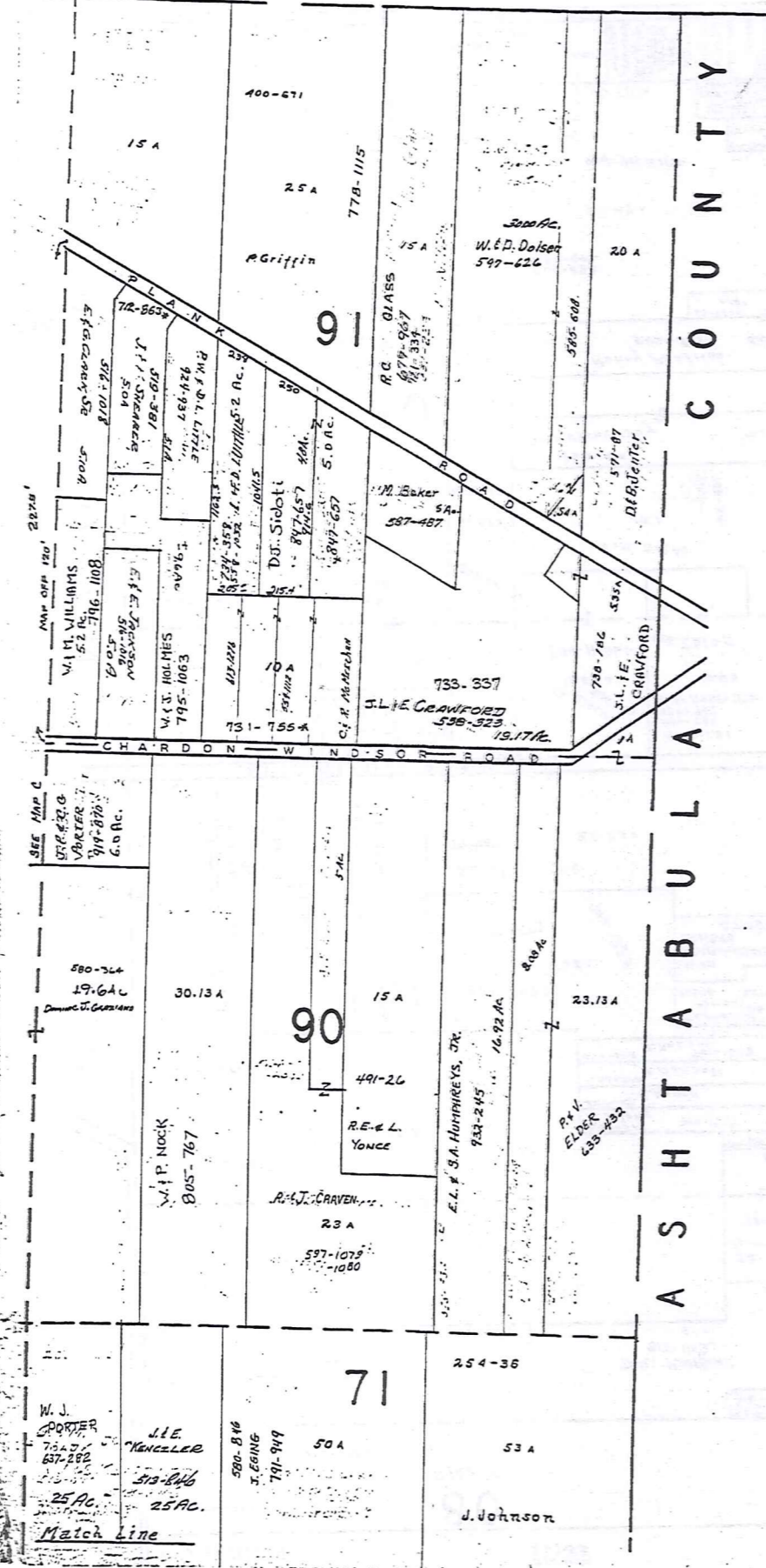
A	B	C	D
E	F	G	H
I	J	K	L
M	N	O	P

HUNTSBURG TWP.

MONTVILLE TWP.

C O U N T Y

A S H T A B U L A



SCALE 1"=300'

JAN. 1, 1994

*inadequate description

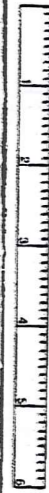
A	B	C	D
E	F	G	H
I	J	K	L
M	N	O	P

HUNTSBURG TWP.

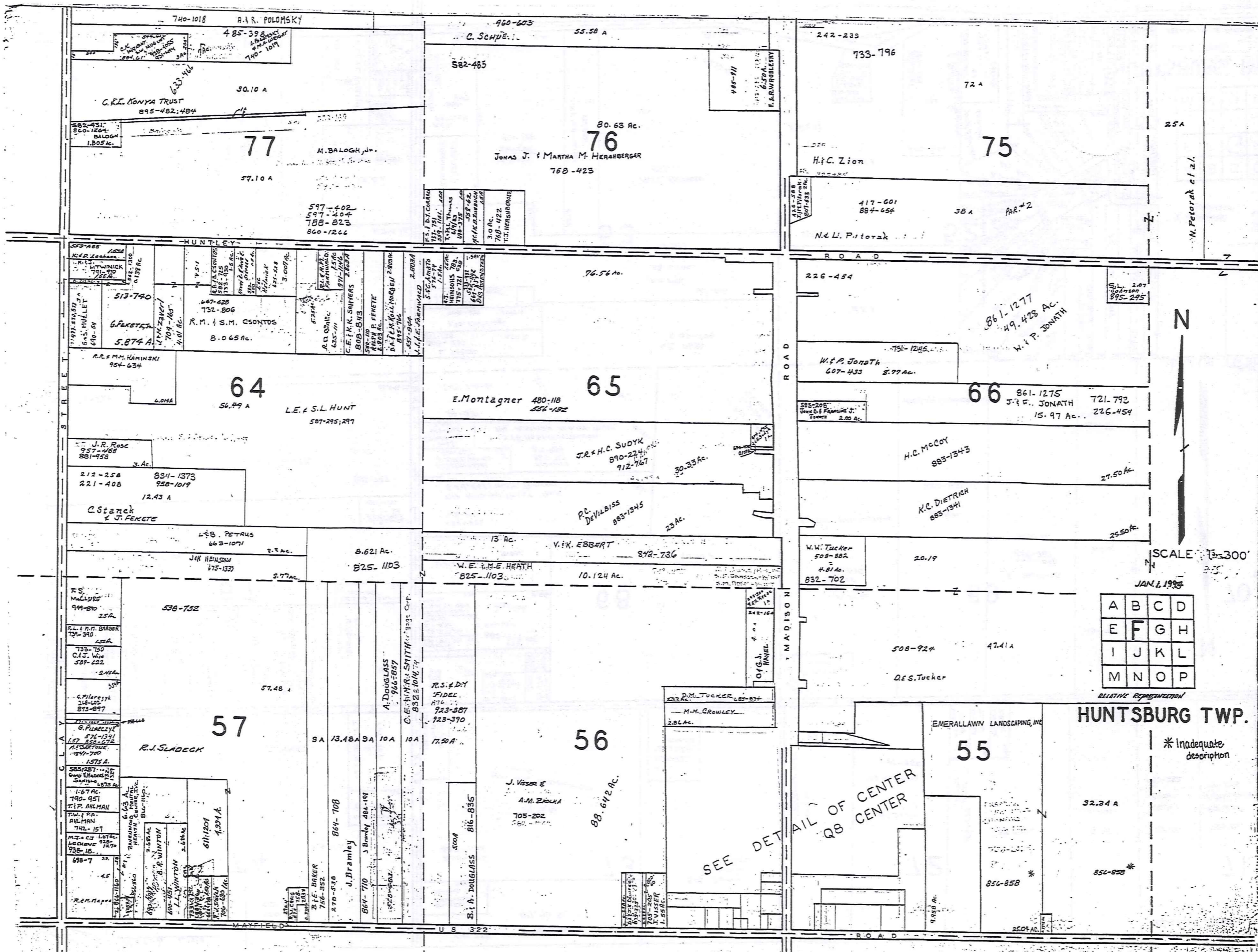
RELATIVE REPRESENTATION

TRW-REDI

SCALE IN 1/10 OF AN INCH



1-800-345-7334



TRW-REDI
 SCALE IN 1/10 OF AN INCH
 1-800-345-7334

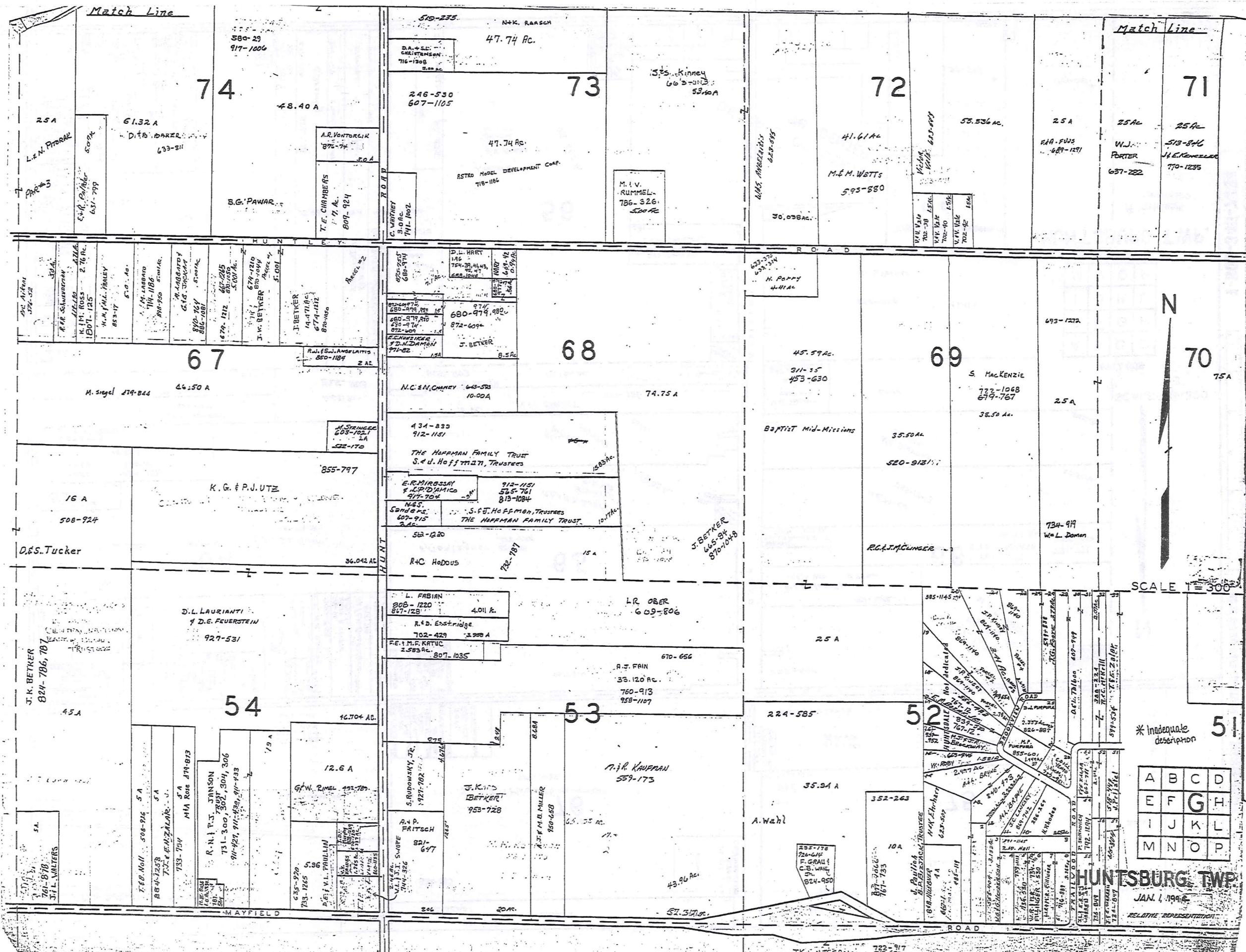
RELATIVE REPRESENTATION

A	B	C	D
E	F	G	H
I	J	K	L
M	N	O	P

HUNTSBURG TWP.

* Inadequate description

SEE DETAIL OF CENTER Q8 CENTER



TRW-REDI
SCALE IN 1/10 OF AN INCH



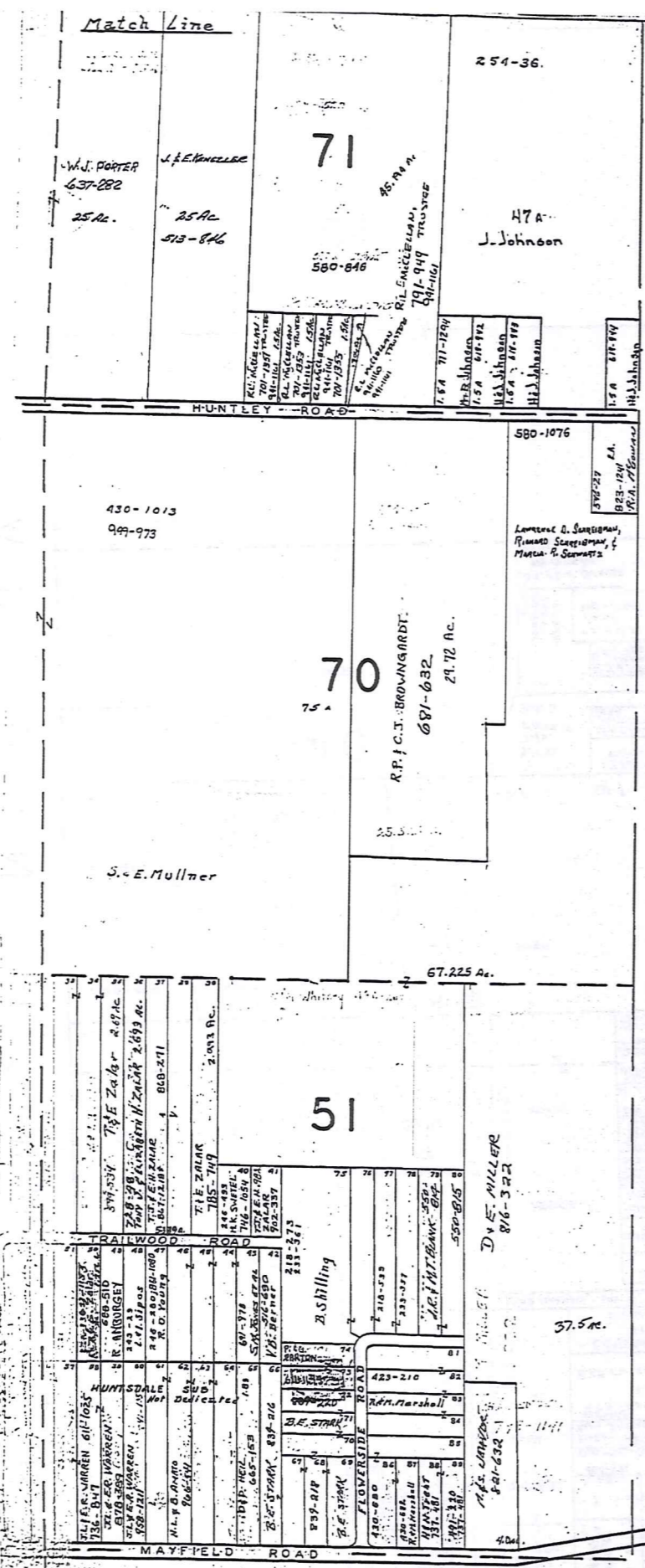
SCALE 1" = 300'

1-800-345-7334

* Inadequate description

A	B	C	D
E	F	G	H
I	J	K	L
M	N	O	P

HUNTSBURG TWP
JAN. 1, 1998
RELATIVE REPRESENTATION



A S H T A B U L A C O U N T Y



* Inadequate description

JAN 4, 1994
Scale 1"=300'

A	B	C	D
E	F	G	H
I	J	K	L
M	N	O	P

RELATIVE REPRESENTATION

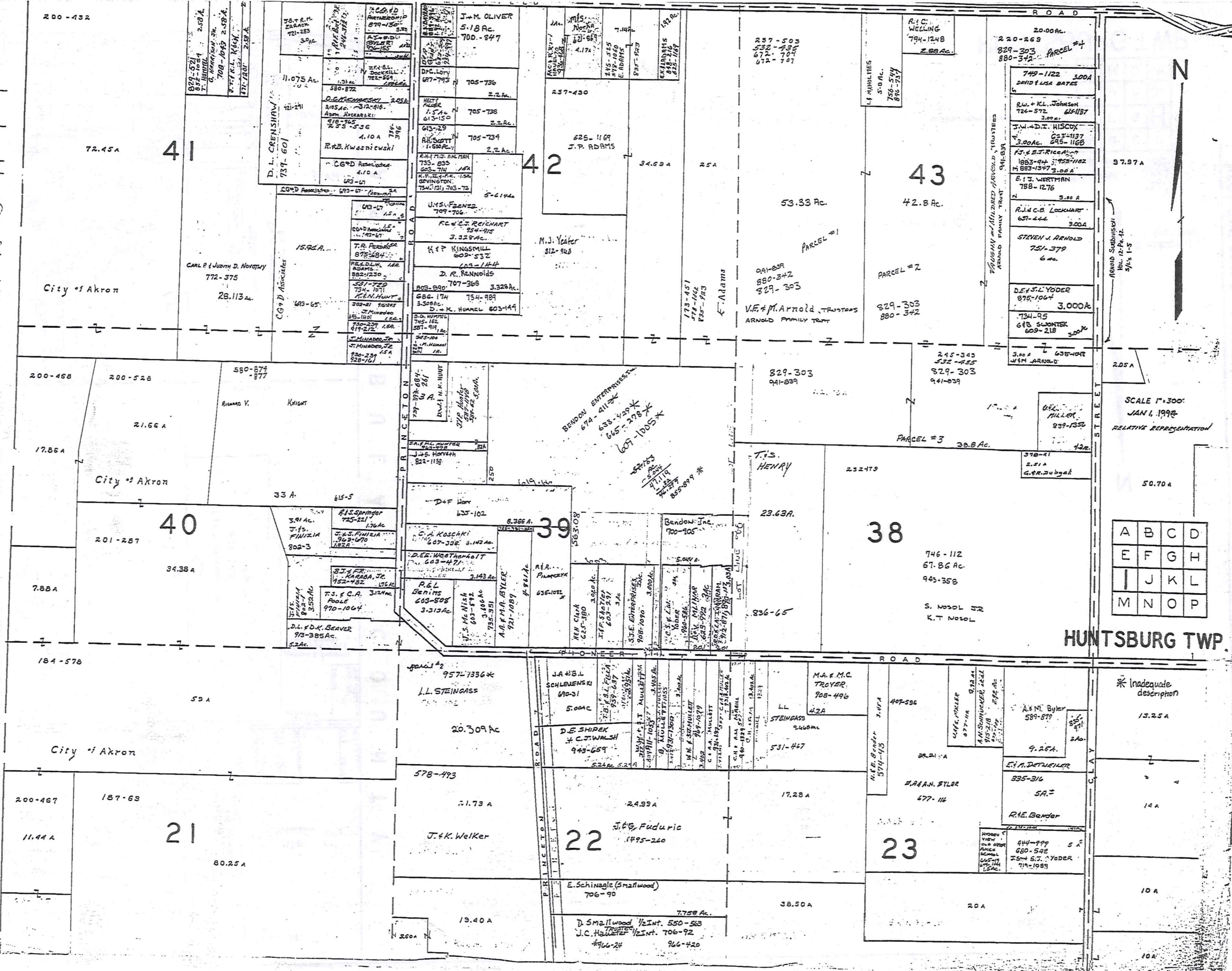
HUNTSBURG TWP.

TRW-REDI SCALE IN 1/10 OF AN INCH



1-800-345-7334

CLARIDON TOWNSHIP



SCALE 1"=300'
JAN 1, 1998
RELATIVE REPRESENTATION

A	B	C	D
E	F	G	H
I	J	K	L
M	N	O	P

HUNTSBURG TWP.

TRW-REDI
SCALE IN 1/10 OF AN INCH

1-800-345-7334

* Inadequate description

13.25 A

14 A

10 A

10 A

200-432

72.45 A

41

City of Akron

CARL P. & JUDITH D. NOVATNY
772-375
28.113 Ac.

11.075 Ac.

D. L. CRENSHAW
737-601

15.92 A

CO'D Associates

15.92 A

15.92 A

15.92 A

15.92 A

15.92 A

15.92 A

15.92 A

15.92 A

15.92 A

15.92 A

15.92 A

15.92 A

15.92 A

15.92 A

15.92 A

15.92 A

15.92 A

15.92 A

15.92 A

15.92 A

15.92 A

15.92 A

15.92 A

15.92 A

15.92 A

15.92 A

15.92 A

15.92 A

15.92 A

15.92 A

15.92 A

15.92 A

J.M. OLIVER
5.18 Ac.
700-847

42

625-1169
J.P. ADAMS

M.J. Yeater
812-948

829-303
941-889

39

836-65

957-1336

L.L. STEINGASS

20.309 Ac.

578-493

21.73 A

J.K. Welker

22

J.E.G. Fuduric
1495-260

E. Schinagle (Smallwood)
706-90

13.40 A

D. Sma. Wood 1/2 Int. 550-563
J.C. Hulse 1/2 Int. 706-92

13.40 A

237-430

43

53.33 Ac.

42.8 Ac.

829-303
880-342

V.F. & M. Arnold, Trustees
ARNOLD FAMILY TRUST

829-303
880-342

829-303
941-889

829-303
941-889

829-303
941-889

829-303
941-889

829-303
941-889

829-303
941-889

829-303
941-889

829-303
941-889

829-303
941-889

829-303
941-889

829-303
941-889

829-303
941-889

829-303
941-889

829-303
941-889

829-303
941-889

829-303
941-889

829-303
941-889

829-303
941-889

829-303
941-889

829-303
941-889

829-303
941-889

829-303
941-889

829-303
941-889

829-303
941-889

829-303
941-889

829-303
941-889

829-303
941-889

829-303
941-889

829-303
941-889

829-303
941-889

829-303
941-889

237-503
532-435
672-104
674-107

53.33 Ac.

42.8 Ac.

829-303
880-342

V.F. & M. Arnold, Trustees
ARNOLD FAMILY TRUST

829-303
880-342

829-303
941-889

829-303
941-889

829-303
941-889

829-303
941-889

829-303
941-889

829-303
941-889

829-303
941-889

829-303
941-889

829-303
941-889

829-303
941-889

829-303
941-889

829-303
941-889

829-303
941-889

829-303
941-889

829-303
941-889

829-303
941-889

829-303
941-889

829-303
941-889

829-303
941-889

829-303
941-889

829-303
941-889

829-303
941-889

829-303
941-889

829-303
941-889

829-303
941-889

829-303
941-889

829-303
941-889

829-303
941-889

829-303
941-889

829-303
941-889

829-303
941-889

R.C. WELING
794-1248
2.88 Ac.

43

42.8 Ac.

829-303
880-342

V.F. & M. Arnold, Trustees
ARNOLD FAMILY TRUST

829-303
880-342

829-303
941-889

829-303
941-889

829-303
941-889

829-303
941-889

829-303
941-889

829-303
941-889

829-303
941-889

829-303
941-889

829-303
941-889

829-303
941-889

829-303
941-889

829-303
941-889

829-303
941-889

829-303
941-889

829-303
941-889

829-303
941-889

829-303
941-889

829-303
941-889

829-303
941-889

829-303
941-889

829-303
941-889

829-303
941-889

829-303
941-889

829-303
941-889

829-303
941-889

829-303
941-889

829-303
941-889

829-303
941-889

829-303
941-889

829-303
941-889

829-303
941-889

20.00 Ac.
220-269
829-303
880-342

43

42.8 Ac.

829-303
880-342

V.F. & M. Arnold, Trustees
ARNOLD FAMILY TRUST

829-303
880-342

829-303
941-889

829-303
941-889

829-303
941-889

829-303
941-889

829-303
941-889

829-303
941-889

829-303
941-889

829-303
941-889

829-303
941-889

829-303
941-889

829-303
941-889

829-303
941-889

829-303
941-889

829-303
941-889

829-303
941-889

829-303
941-889

829-303
941-889

829-303
941-889

829-303
941-889

829-303
941-889

829-303
941-889

829-303
941-889

829-303
941-889

829-303
941-889

829-303
941-889

829-303
941-889

829-303
941-889

829-303
941-889

829-303
941-889

829-303
941-889

829-303
941-889

20.00 Ac.
220-269
829-303
880-342

43

42.8 Ac.

829-303
880-342

V.F. & M. Arnold, Trustees
ARNOLD FAMILY TRUST

829-303
880-342

829-303
941-889

829-303
941-889

829-303
941-889

829-303
941-889

829-303
941-889

829-303
941-889

829-303
941-889

829-303
941-889

829-303
941-889

829-303
941-889

829-303
941-889

829-303
941-889

829-303
941-889

829-303
941-889

829-303
941-889

829-303
941-889

829-303
941-889

829-303
941-889

829-303
941-889

829-303
941-889

829-303
941-889

829-303
941-889

829-303
941-889

829-303
941-889

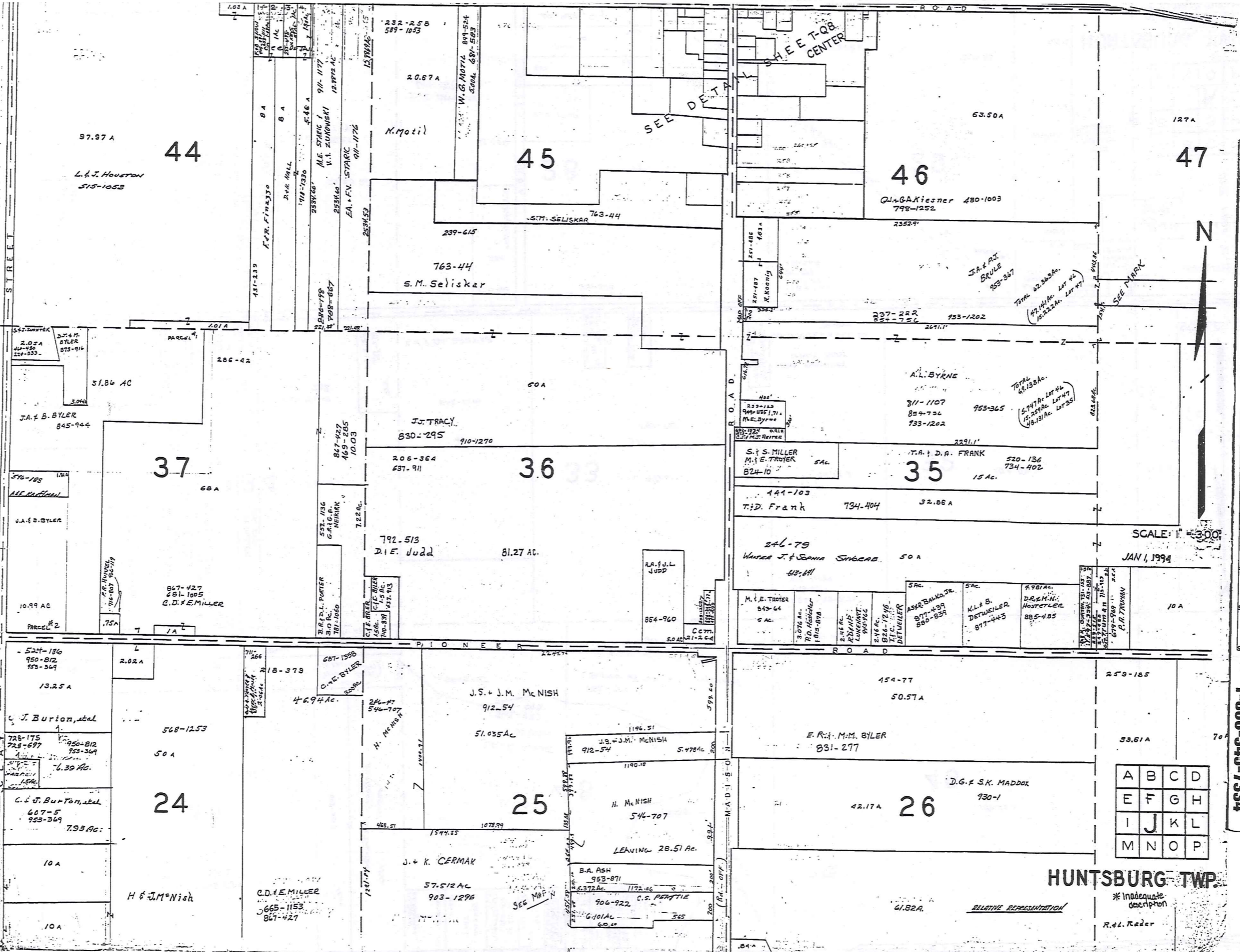
829-303
941-889

829-303
941-889

829-303
941-889

829-303
941-889

829-303



TRW-REDI
SCALE IN 1/10 OF AN INCH



SCALE: 1" = 300'

JAN 1, 1994

1-800-345-7334

A	B	C	D
E	F	G	H
I	J	K	L
M	N	O	P

HUNTSBURG TWP.

* Inadequate description

R.L. Rader

RELATIVE REPRESENTATION

The Board of Trustees of
HUNTSBURG TOWNSHIP
824-668

47
9.7 Ac

48
J.P. & G. LOVE
65.64 AC
862-987
862-992

49
152.50 A

237-222
854-756
933-1202
A.L. BYRNE
953-365

TOTAL 62.363 Ac.
(47.141 Ac. Lot 46
(15.222 Ac. Lot 47
(9.999 Ac. Lot 48)
Meadowridge Farm
647-177

J.K. BETKER
870-1053

32.86 A
T.F.D. FRANK
734-404
444-103
V.F.S. SHYORAB
1413-64
M.E.G.A. ARISTRONG
917-144
759-196
M.E.G.A. ARISTRONG
917-239
641-180
M.E.G.A. ARISTRONG
917-239
641-180
J.M. MILLER
826-560
J.M. MILLER
826-558
J.M. MILLER
826-558
50 A
446-734
10 A
L.K. BUTTAN

34
52.19 A
M.M. MILLER
665-1252
J.M. MILLER
826-558
J.M. MILLER
826-558

33
99 Ac.
J.J. & E.B. MAST
599-505
43 A
542-1203
C.W. & D.A. DROTAR
518-288
657-288

32
104.69 A
17.21 A
233-320-273
728-691*
912-1157*
THE RUDOWSKY
FAMILY TRUST
STEPHEN RUDOWSKI, SR.
TRUSTEE

Match Line
R.L. GUNN
553-403
1818 Ac.
25.43 A
669-852
ELIGA GUNN
17 Ac
R.G. & B.L. TOWNSEND
637-546

27
49.30 Ac.
J.I. DETWEILER
699-127, 129
J.I. DETWEILER
699-127, 129
TOTAL 71.51 AC
792-927

28
73 A
N.R. & E.J. BYLER
680-340
7.5 A
C.H. MILLER
35.64 Ac
HAYES ROAD
SEE MAP O
5 Ac
SEE MAP O
5 Ac
SEE MAP O
5 Ac

29
78 Ac.
A. MISTERKA
98.12 AC
188-525
193-33
811-1085
844-624
PARCEL 1
PARCEL 2

18.25
702-665
C.U. & H.H. Detweiler
19.97 AC
844-624
HUNTSBURG TWP
RELATIVE REPRESENTATION
* Inadequate description

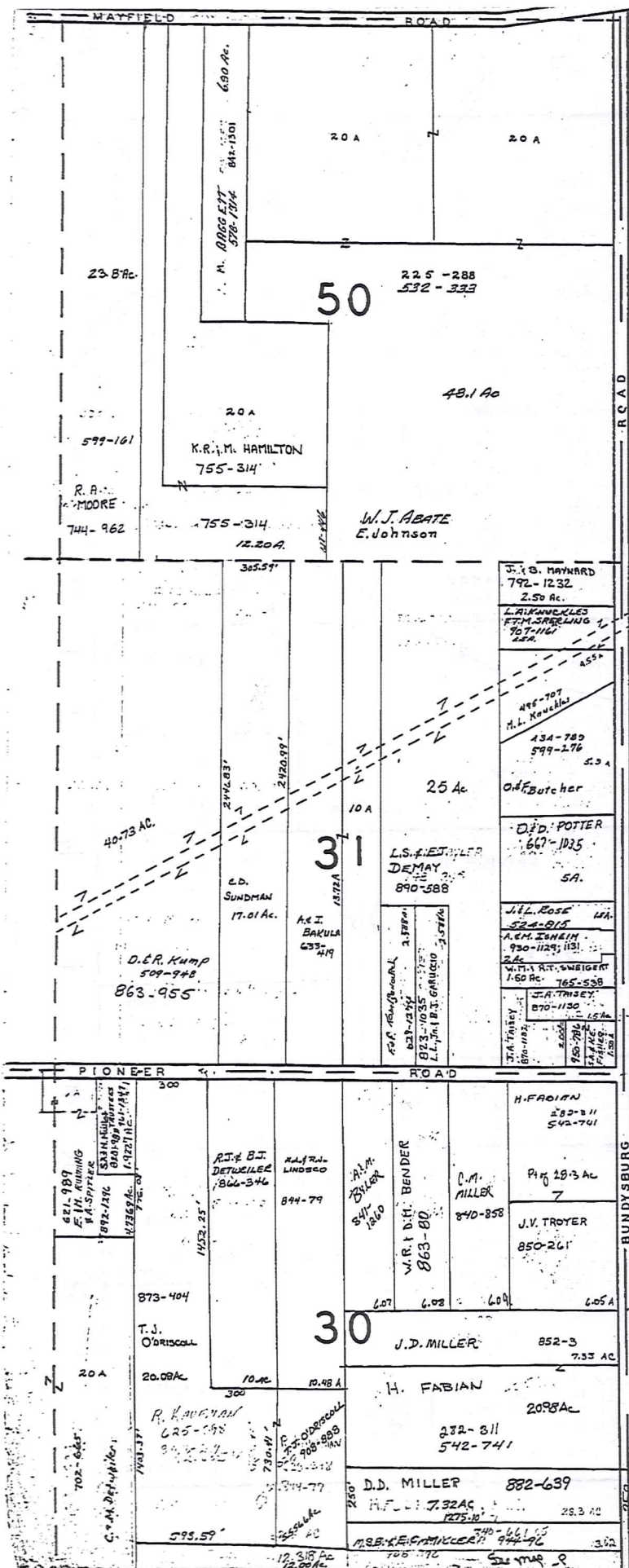
Match Line
JAN. 1, 1996
SEE PAGE 271
A B C D
E F G H
I J K L
M N O P

TRW-REDI
SCALE IN 1/10 OF AN INCH

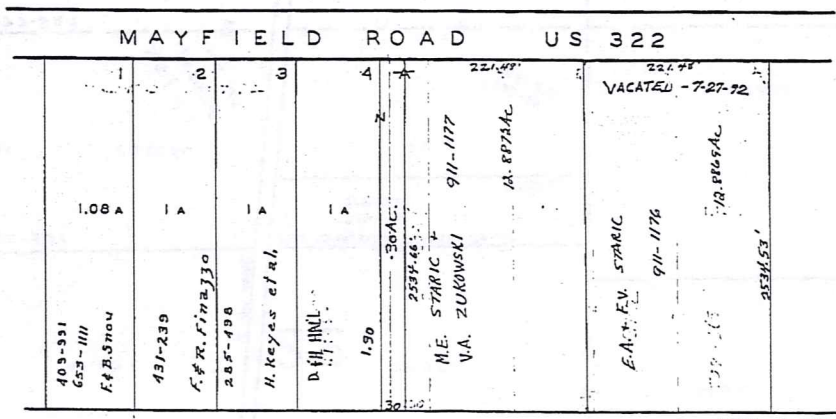


SCALE 1" = 300'

1-800-345-7334



A S H T A B U L L A C O U N T Y



SICZ SUBDIVISION - VACATED - BLOCK A, 7-27-72 5/25-6-7-8
VOL. 6 - PG. 87
LOT 44
SCALE 1" = 100'

TRW-REDI SCALE IN 1/10 OF AN INCH 1-800-345-7334



SCALE 1" = 300'

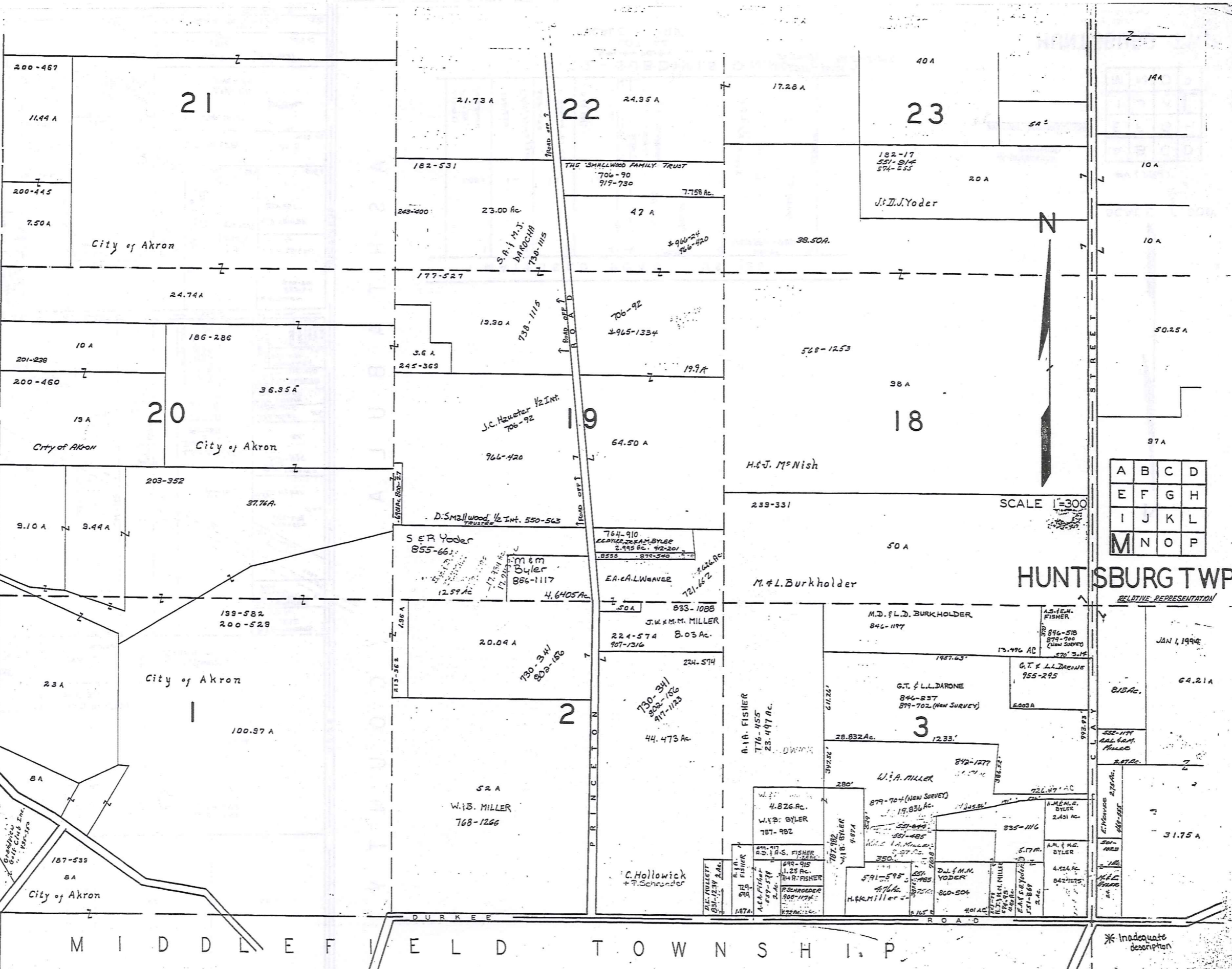
JAN 1, 1994

A	B	C	D
E	F	G	H
I	J	K	L
M	N	O	P

* Inadequate description
RELATIVE REPRESENTATION

HUNTSBURG TWP

C
C
L
A
R
I
D
O
N
T
O
W
N
S
H
I
P



TRW-REDI
SCALE IN 1/10 OF AN INCH

A	B	C	D
E	F	G	H
I	J	K	L
M	N	O	P

SCALE 1"=300'

HUNTSBURG TWP

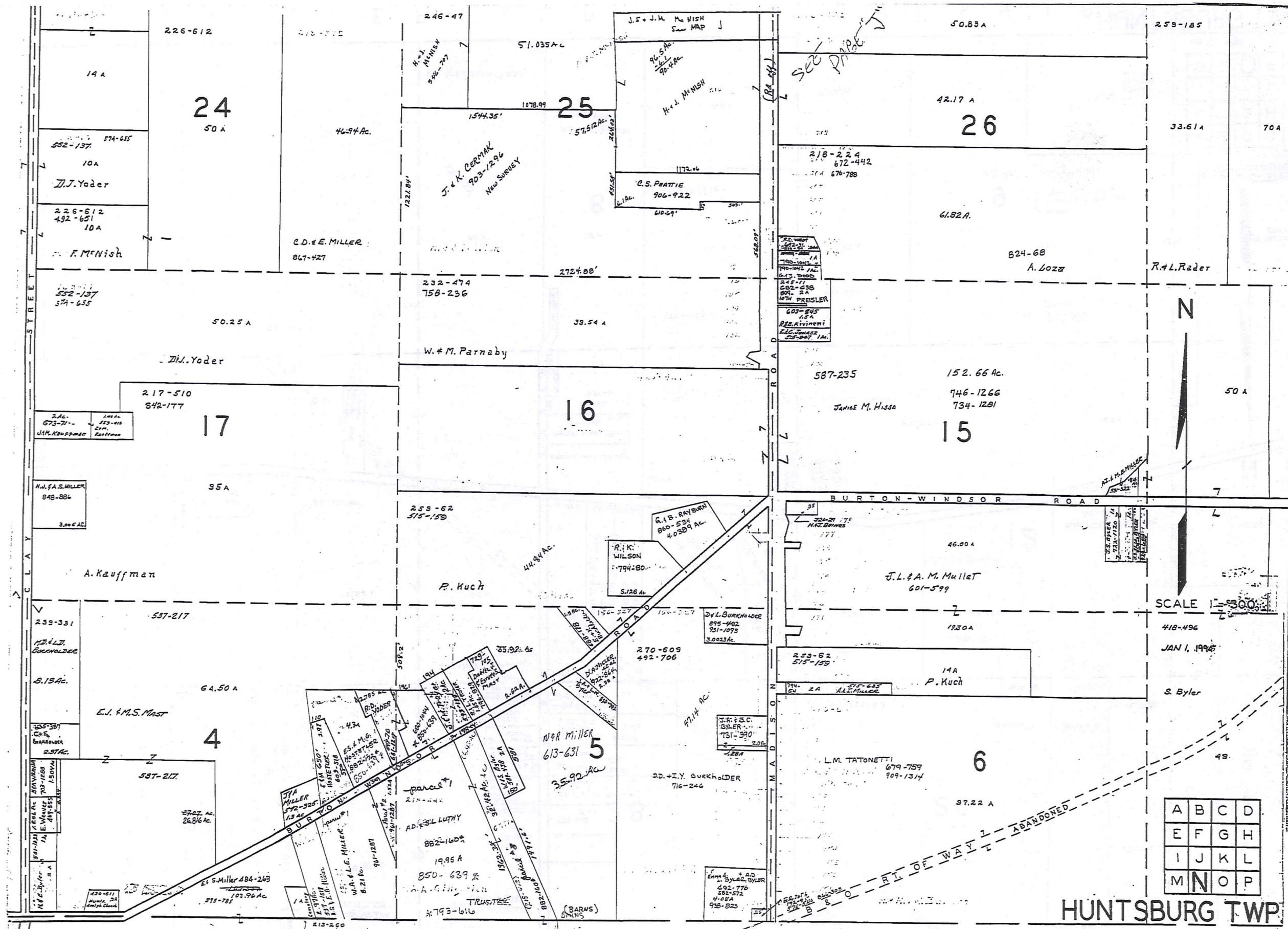
RELATIVE REPRESENTATION

JAN 1, 1994

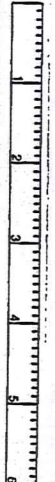
1-800-345-7334

M
I
D
D
L
E
F
I
E
L
D
T
O
W
N
S
H
I
P

* Inadequate description



TRW-REDI
SCALE IN 1/10 OF AN INCH



1-800-345-7334



SCALE 1" = 300'

418-496

JAN 1, 1996

S. Byler

A	B	C	D
E	F	G	H
I	J	K	L
M	N	O	P

HUNTSBURG TWP

RELATIVE REPRESENTATION

* Inadequate description

M I D D L E F I E L D T O W N S H I P

TRW-REDI SCALE IN 1/10 OF AN INCH

1-800-345-7334

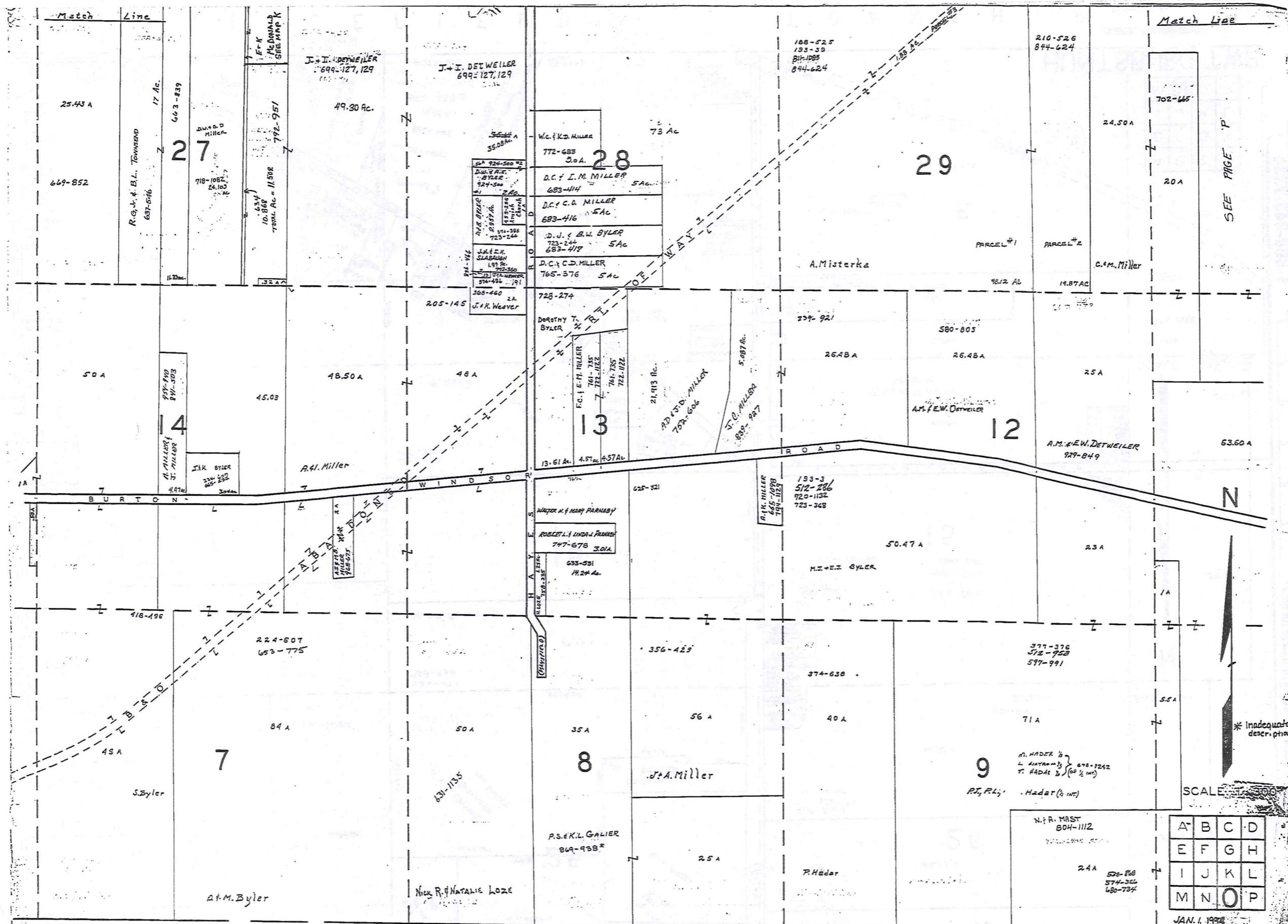
SEE PAGE P

* Inadequate description

A	B	C	D
E	F	G	H
I	J	K	L
M	N	O	P

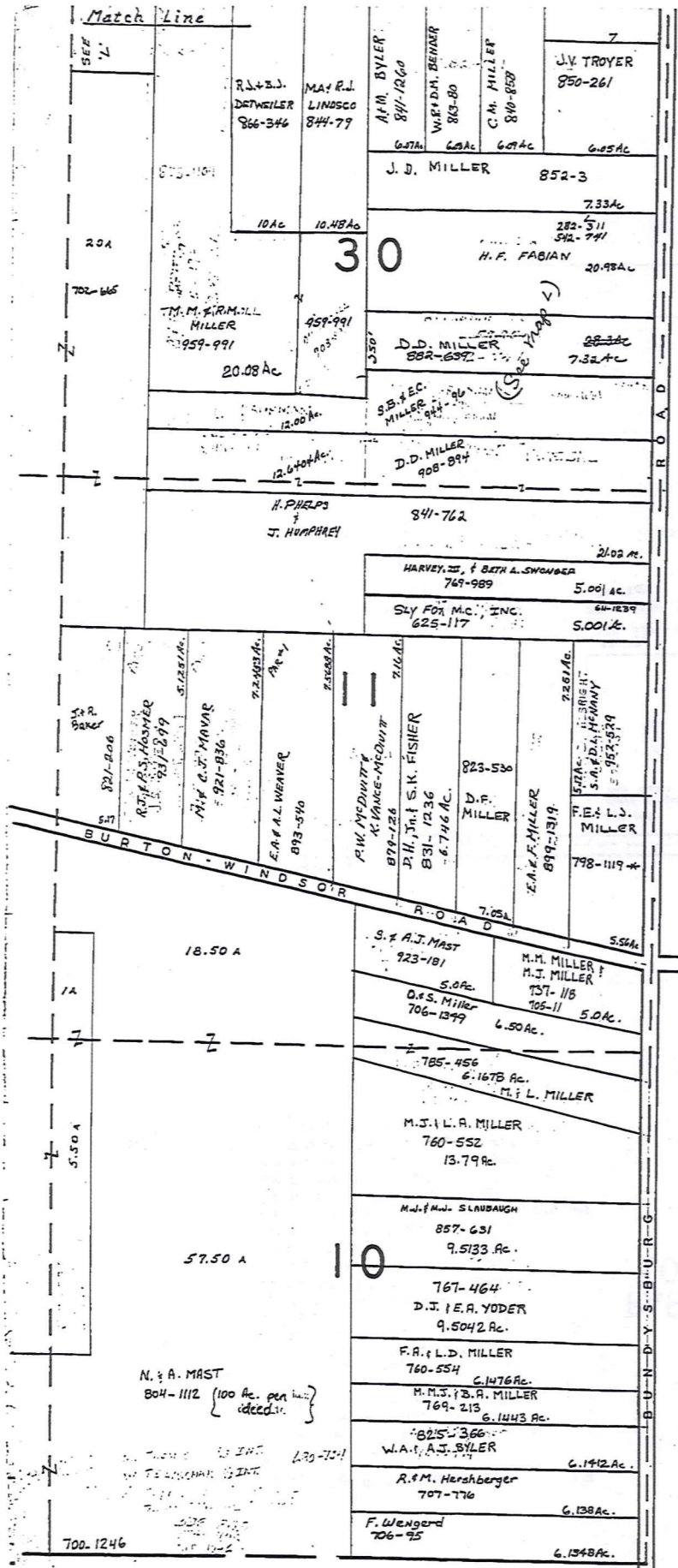
JAN. 1, 1998

SCALE 1" = 300'



M I D D L E F I E L D T O W N S H I P H U N T S B U R G T W P

RELATIVE REPRESENTATION



ASHTABULA COUNTY

TRW-REDI SCALE IN 1/10 OF AN INCH 1-800-345-7334



SCALE = 300
JAN 1, 1994

A	B	C	D
E	F	G	H
I	J	K	L
M	N	O	P

* Inadequate description

MIDDLEFIELD TWP.

HUNTSBURG TWP.

HUNTSBURG TP. CENTER

INDEX TO PROPERTIES HAVING #NO.'S

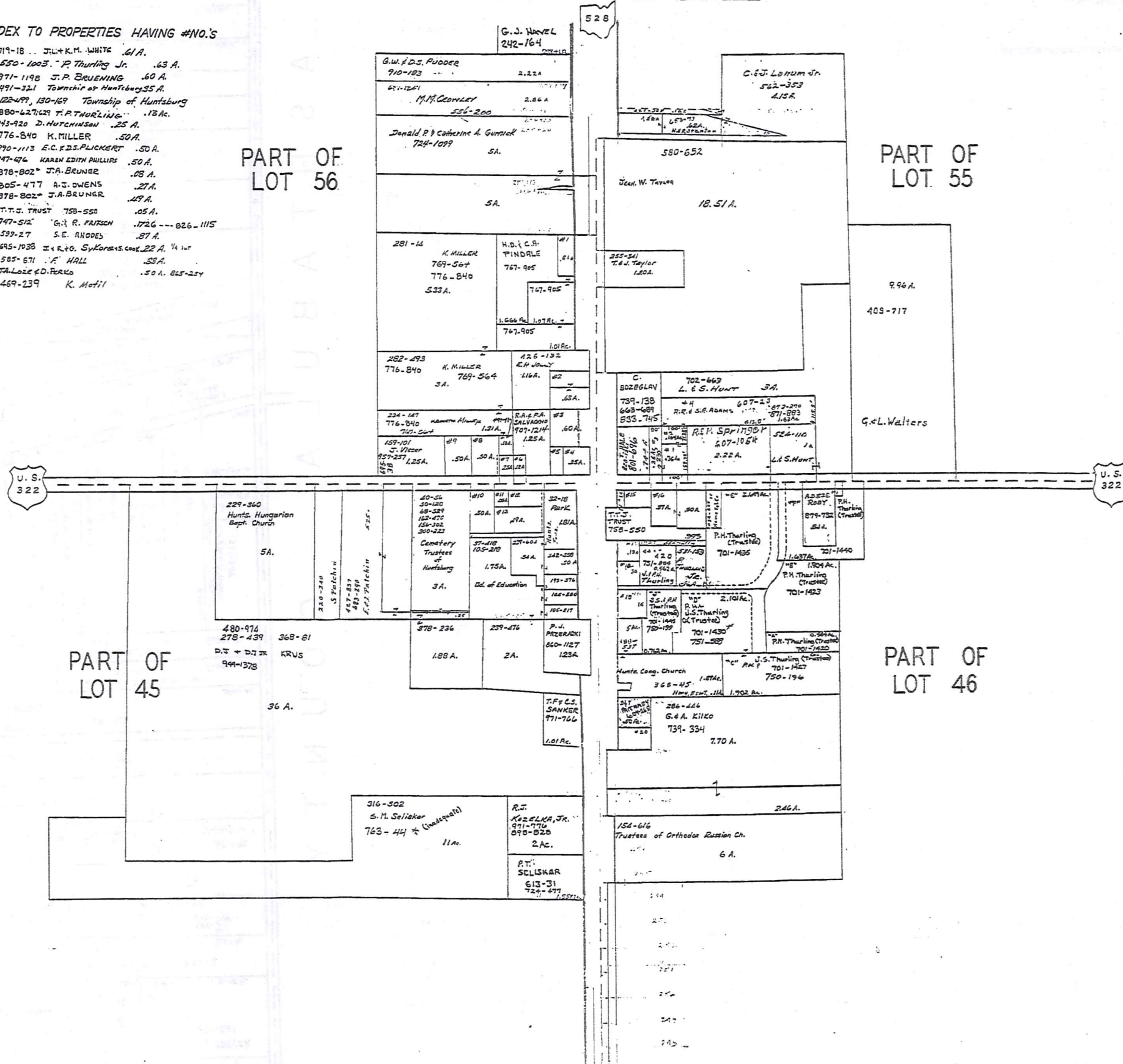
- #1 719-18 J.L. & K.M. WHITE .61 A.
- #2 550-1003 P. Thurling Jr. .63 A.
- #3 971-1198 J.P. BRUENING .60 A.
- #4 491-321 Township of Huntsburg 35 A.
- #5 122-491, 130-169 Township of Huntsburg
- #6 880-627, 629 T.P. THURLING .13 Ac.
- #7 943-920 D. HUTCHINSON .25 A.
- #8 776-840 K. MILLER .50 A.
- #9 990-1113 E.C. D.S. Plickert .50 A.
- #10 747-676 KAREN EDITH PHILLIPS .50 A.
- #11 878-802 J.A. BRUNER .08 A.
- #12 905-477 A.J. DWIENS .27 A.
- #13 878-802 J.A. BRUNER .47 A.
- #14 T.T.G. TRUST 758-550 .05 A.
- #15 747-512 G.A. R. PARSON .1726 --- 826-1115
- #16 593-27 S.E. RHODES .87 A.
- #17 695-1038 J. & K. S. KORSIS CO. 22 A. 1/4 Int
- #18 585-671 F. HALL .33 A.
- #19 T.A. LOZE & D. PARKS .50 A. 815-254
- #20 469-239 K. Motil

PART OF
LOT 56

PART OF
LOT 55

PART OF
LOT 45

PART OF
LOT 46



JAN. 1, 1994
SCALE: 1 IN. = 200'

RELATIVE REPRESENTATION

* Inadequate description

Q8 CENTER

TRW-REDI

SCALE IN 1/10 OF AN INCH

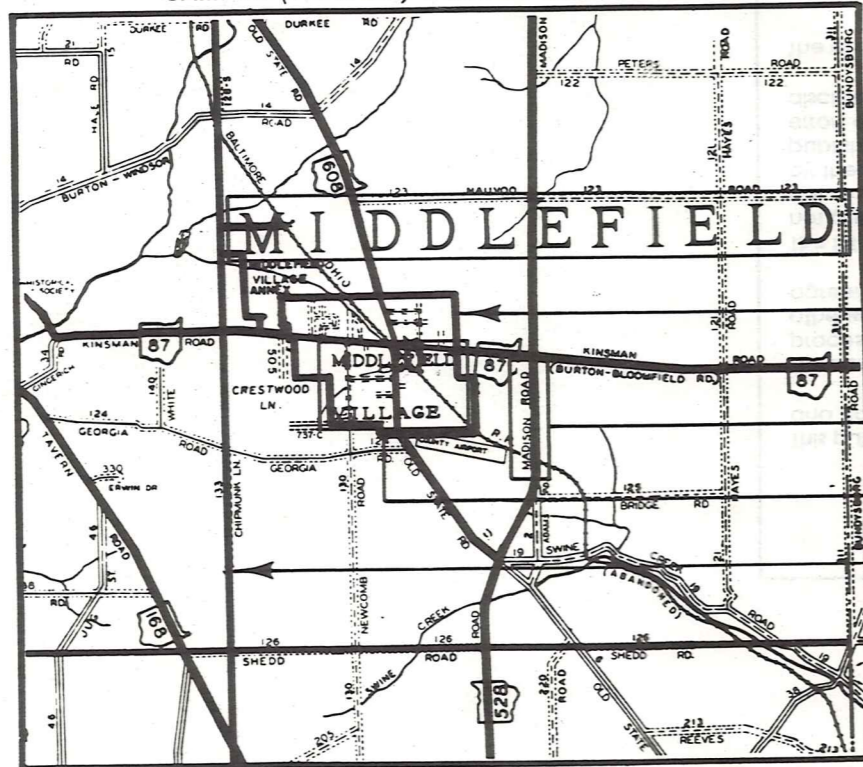


1-800-345-7334

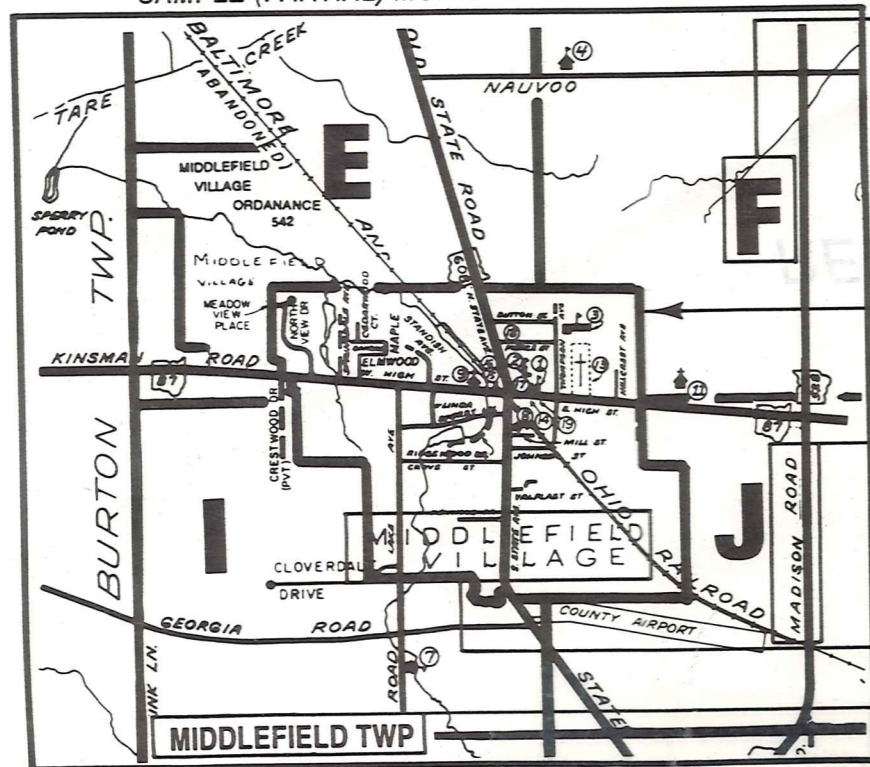
Explanation and Use Sheet for Geauga County, Ohio

A

SAMPLE (PARTIAL) COUNTY INDEX MAP



SAMPLE (PARTIAL) MUNICIPALITY INDEX MAP



SAMPLE (PARTIAL) MAP PAGE



- Tract Lot Number
- Acreage
- Township Name
- Village Boundary
- Street Name
- Village Name
- Township Boundary
- Owners Name
- Denotes Continuous Ownership
- Deed Book & Page
- Map Page Number
- Township Name
- Village Name

- Village Boundary
- Street Name
- Village Name
- Township Name

USE OF THE MAP VOLUME

1. LOCATE THE GENERAL AREA OF INTEREST ON THE COUNTY INDEX MAP AND NOTE THE MUNICIPALITY NAME (TOWNSHIP OR VILLAGE).
 2. REFER TO THE TABLE OF CONTENTS AND NOTE THE BEGINNING ATLAS PAGE NUMBER FOR THE MUNICIPALITY OF INTEREST.
 3. TURN TO THE PAGE INDICATED, ON THIS PAGE WILL APPEAR AN INDEX MAP FOR THAT MUNICIPALITY.
 4. LOCATE THE GENERAL AREA OF INTEREST AND NOTE THE MAP PAGE NUMBER. THIS MAY BE EITHER A LETTER OR A NUMBER.
 5. MAP PAGES ARE IN ALPHABETICAL (OR NUMERICAL) SEQUENCE FOLLOWING THE MUNICIPALITY INDEX MAP. FOLLOW SEQUENCE TO THE MAP PAGE INDICATED.
 6. LOCATE SPECIFIC PARCEL OF INTEREST AND NOTE THE DESIRED INFORMATION.
- NOTE: ON SOME MAPS YOU MAY BE REFERRED TO A DETAIL SHEET SHOWING AN ENLARGEMENT OF THE AREA. THESE MAPS ARE FOUND AT THE END OF THE REGULAR MAP PAGES IN EACH MUNICIPALITY IN EITHER ALPHABETICAL OR NUMERICAL SEQUENCE.
- NOTE: CHARDON VILLAGE HAS TITLE SHEETS. TO LOCATE OWNERS NAME, NOTE THE PARCEL NUMBER, REFER TO THE TITLE PAGE FOLLOWING THE MAP OF INTEREST, FOLLOW NUMERICAL SEQUENCE TO THE PARCEL NUMBER OF INTEREST AND NOTE THE DESIRED INFORMATION. IN ALL OTHER MUNICIPALITIES THE OWNERS NAME APPEARS ON THE MAP PAGE.